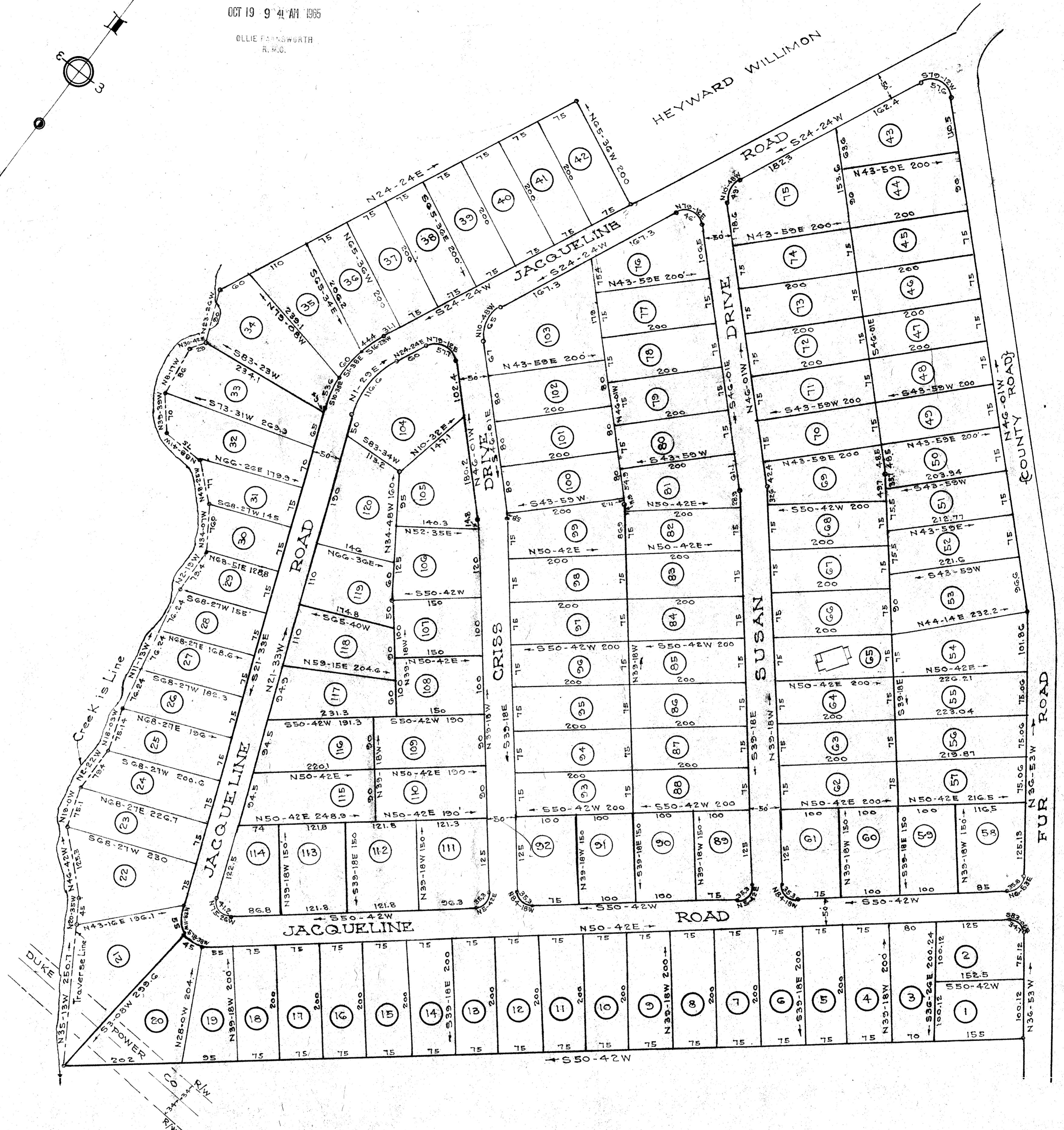


FILED
GREENVILLE CO. S. C.
OCT 19 9 41 AM 1965
OLLIE FARMWORTH
R. M. O.



GOLDEN GROVE ESTATES

PROPERTY OF M. W. FORE
GREENVILLE COUNTY S. C.
Scale 1" = 100' September 1965

DALTON & NEVES, ENGINEERS
GREENVILLE S. C.

NOTES:
5Ft. Drainage & Utility Easements
along all side & rear lot lines.
Iron Pins at all Corners
Field Book 370
10Ft. Drainage Easement East From
Creek along Rear Lots 20 thru 34

3.00
999 - 69

OCT 19 1965
12023

1965 Filed This 19 day of... 1965
And Recorded in Volume 69 of Public Records
at Greenville, S. C.
O. F. W. FARMWORTH
Register Merne Conveyance Greenville County, S. C.